

**Company name****Address**

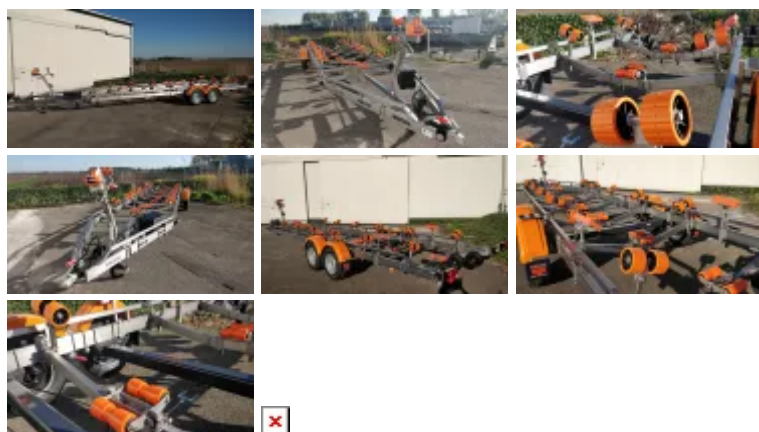
Vanclaes B.V.  
Gnephoek 18  
2401 LP Alphen aan den Rijn  
The Netherlands.

**Phone number****VAT number****IBAN-code:****Email address:****Website:**

+31 (0)172-200 100  
NL.825512761.B01  
NL16 INGB 0006 0240 14  
info@vanclaes.com  
<https://vanclaes.com>

**Navis 3500 -14"- 1050 braked 2 axle**

- **Boat Type:** Sloop, Tender
- **Adjustable Stamps:** 2
- **Unique GYRO Roller System:** No
- **Gross Weight:** 3500 kg
- **Payload:** 2795 kg
- **Tire size:** 14 inch
- **Kim rollers:** 14
- **Keel roller:** 14
- **Trailer length:** 1050 cm
- **Axles:** 2 Axles
- **Trailer width:** 230 cm
- **Tilttable:** no
- **Braked:** Yes
- **Trailer weight:** 705 kg



**€11.963,71**

€9.887,36 excl. VAT

**Vanclaes Navis braked boat trailer**

The Vanclaes Navis braked boat trailer is suitable for Sloops and Tenders with a continuous keel.

The wiring is neatly concealed in the base frame and is connected to the socket of your car by a 13-pin (Jaeger type) plug. The entire basic frame of this boat trailer as well as the steel parts of the loading system and the winch post are made entirely of stainless steel.

**VANCLAES**

Experience Center

Gnephoek 18  
2401 LP Alphen aan den Rijn  
The Netherlands.

+31 (0)172-200 100  
info@vanclaes.com  
<https://vanclaes.com>

KvK: 280 400 37  
BTW: NL.825512761.B01  
Bank ING: NL16INGB0006024014  
BIC: INGBNL2A

By using stainless steel instead of the standard hot-dip galvanized steel in the market, the Vanclaes trailers have the advantage that they are much lighter with an often even stronger and more robust chassis. So in addition to the enormous qualitative and aesthetic advantages of this much more luxurious and beautiful material, a weight saving of +/- 25% is also a fact, which results in a higher load capacity and more possibilities for applying fine and practical options that you can help during driving as well as on the trailer ramp.

This boat trailer has two light bars that can be extended over a length of one meter and are equipped with 100% waterproof LED lighting. So you do not have to remove first the lighting from the boat trailer before launching the boat.

The hot-dip galvanized and then anthracite powder-coated braked axle line is from the German top brand WAP and is equipped with stainless steel water-resistant compact bearings. If you choose the disc brakes option, 100% waterproof oil bearings are supplied as standard. In addition, every braked trailer comes standard with shock absorbers on each axle line. The overrun brake is also standard, after the hot-dip galvanizing, anthracite powder coated.

The Vanclaes bow rollers are made of a plastic material. The keel rollers are made from Polyurethane. Both the keel and bow rollers are 100% scratch and scuff free.

The winch post and the bow support can easily be adjusted in length and height. The keel and bow rollers that your boat is on can also be moved in height and / or lengthwise. The automatically braked luxury safety hand winch comes standard with a solid winch belt. For safe transport, two adjustable stamps are mounted on the rear of the trailer.

All Vanclaes Navis models come standard with a centering device with scratch and scuff-free Polyurethane foam rollers.

**The prices of all Vanclaes braked road trailers are included costs of the mandatory C.O.C. document and removal fee for the tires. So complete and no surprises afterwards.**

	Art. #	Description	Incl. VAT	Excl. VAT	
>	401537	Side step with anti slip above the mudguard	€185,05	€152,93	<input type="checkbox"/>
>	406042	3 year extended warranty 2 axle braked	€229,00	€189,26	<input type="checkbox"/>
>	401605	Vanclaes Ratchet straps 50mm with hook	€57,44	€47,47	<input type="checkbox"/>
>	401516	Side step with anti slip	€127,61	€105,46	<input type="checkbox"/>
>	401591	Tempo 100 admission (DU)	€54,43	€44,98	<input type="checkbox"/>
>	401580	Sparewheel bracket standard 1800 - 3500	€76,58	€63,29	<input type="checkbox"/>
>	401604	Plastic storage box with bracket	€190,14	€157,14	<input type="checkbox"/>
>	401577	Sparewheel 14" 5 bolts	€228,42	€188,78	<input type="checkbox"/>
>	401532	Nano coating 2 axle	€478,56	€395,50	<input type="checkbox"/>

KvK: 280 400 37  
 BTW: NL.825512761.B01  
 Bank ING: NL16INGB0006024014  
 BIC: INGBNL2A

**VANCLAES**  
 Experience Center

Gnephoek 18  
 2401 LP Alphen aan den Rijn  
 The Netherlands.

+31 (0)172-200 100  
[info@vanclaes.com](mailto:info@vanclaes.com)  
<https://vanclaes.com>

	Art. #	Description	Incl. VAT	Excl. VAT	
>	401520	Electric winch incl. charger, battery and battery box, max pull 3500kg	€2.354,45	€1.945,83	<input type="checkbox"/>
>	401675	Upgrade Moveable lighting bars	€312,65	€258,39	<input type="checkbox"/>
>	401570	Tempo 100 admission (NL)	€248,84	€205,65	<input type="checkbox"/>
>	401664	Black instead of orange mudguards 2 axle 14"	€0,00	€0,00	<input type="checkbox"/>
>	401667	Set of protective covers tail lights rectangular	€159,53	€131,84	<input type="checkbox"/>
>	401523	Marine flushing kit 2 axle drum brakes	€382,84	€316,40	<input type="checkbox"/>
>	401508	LED Light Processor Plug & Play	€202,90	€167,69	<input type="checkbox"/>
>	401616	Intake- and adjustment package 2 and 3 axle (additional required parts not included)	€955,82	€789,93	<input type="checkbox"/>
>	401547	Fixed Lock Type WAK35 3500kg braked	€312,65	€258,39	<input type="checkbox"/>
>	401669	Set of stamps 3500 and 2500 frame	€421,12	€348,03	<input type="checkbox"/>
>	401654	Alloy wheel upgrade 2 axle 14" 5 bolts	€689,12	€569,52	<input type="checkbox"/>
>	5090000075	Floating Poles	€414,75	€342,77	<input type="checkbox"/>
>	401648	Walkramp 1050 trailer	€1.346,31	€1.112,65	<input type="checkbox"/>
>	401601	Double Lock chain lock 200 (SCM approved)	€272,25	€225,00	<input type="checkbox"/>
>	401607	AL-KO coupling with stabiliser (3000-3500 Kg)	€904,78	€747,75	<input type="checkbox"/>
>	401623	Powder coating trailer till 3500 kg	€3.094,61	€2.557,53	<input type="checkbox"/>
>	401578	Sparewheel 14" 5 bolts alloy	€400,69	€331,15	<input type="checkbox"/>
>	601888	entrance for trailer 230 wide	€442,74	€365,90	<input type="checkbox"/>
>	401585	Upgrade Disc brakes 2 axle 1800	€3.636,97	€3.005,76	<input type="checkbox"/>
>	5000002	Upgrade 2-axle to coil spring system	€500,00	€413,22	<input type="checkbox"/>
>	401557	Alloy wheel upgrade 2 axle 15" 5 bolts Black	€689,12	€569,52	<input type="checkbox"/>
>	401770	Set of stamps adjustable with pin 80/120/150 frame	€603,06	€498,40	<input type="checkbox"/>

KvK: 280 400 37  
 BTW: NL.825512761.B01  
 Bank ING: NL16INGB0006024014  
 BIC: INGBNL2A

## VANCLAES

Experience Center

Gnephoek 18  
 2401 LP Alphen aan den Rijn  
 The Netherlands.

+31 (0)172-200 100  
[info@vanclaes.com](mailto:info@vanclaes.com)  
<https://vanclaes.com>